



POLYPATCH 1 TON APPLICATOR

PART MANUAL - 26370

Revised: 5/99

POLYPATCH 1 TON APPLICATOR



TABLE OF CONTENTS

| | |
|--|-------|
| PolyPatch 1 Ton Applicator..... | 5 |
| Safety Precautions..... | 6-7 |
| Limited Warranty..... | 7 |
| Warranty Claim Instructions..... | 8 |
| Specifications..... | 9 |
| Introduction..... | 10 |
| Operating Instructions | |
| Machine Start Up..... | 11-12 |
| Loading Machine..... | 12 |
| Shutdown & Clean-Out Procedure..... | 12 |
| Overnight Heaters..... | 12 |
| Inside Pivot Gate Photo (Figure 1)..... | 13 |
| Material Trough Assembly-44680 Photo (Figure 2)..... | 14 |
| Control Box Assembly-44690 Photo (Figure 3)..... | 15 |
| Storing Machine..... | 16 |
| Instructions for Ordering Parts..... | 16 |
| Maintenance | |
| Maintenance Instructions..... | 17 |
| Maintenance Chart..... | 18 |
| Service Instructions..... | 19 |
| Recommended Fluids & Lubricants..... | 20 |
| Trouble Shooting | |
| Trouble-Shooting Hydraulics Guide..... | 21 |
| Burner Trouble-Shooting Guide..... | 22 |
| Parts | |
| Propane Melter Assy.-44600-1PB Diagram and Parts..... | 23-25 |
| Propane Melter Assy. Optional Components | |
| 44600-2PB Diagram and Parts..... | 26-27 |
| Propane Tank and Frame Assy.-44601-1PB Diagram and Parts..... | 28-30 |
| Propane Tank and Frame Assy.-44601-2PB Diagram and Parts..... | 31-33 |
| Propane Tank and Frame Assy.-44601-3PB Diagram and Parts..... | 34-36 |
| Propane Decal Kit-44602PB Diagram and Parts..... | 37-39 |
| Ignition Cable Assy.-44638PB Diagram and Parts..... | 40-41 |
| Material Trough Assembly-44680PB Photo, Diagram and Parts..... | 42-44 |
| Control Box Assembly-44690PB Photo, Diagram and Parts..... | 45-48 |
| Propane Hydraulic Schematics-26560PB Diagram and Parts..... | 49-50 |
| Propane LPG Piping Diagram-26561PB Diagram and Parts..... | 51-52 |

POLYPATCH 1 TON APPLICATOR

This manual is furnished with each new **CRAFCO POLYPATCH APPLICATOR**. The manual will help your machine operators learn to run the sealer properly and understand its mechanical functions for trouble-free operation.

Your **CRAFCO POLYPATCH APPLICATOR** is designed to give excellent service and save maintenance expense. However, as with all specifically engineered equipment, you can get best results at minimum costs if:

1. You operate your machine as instructed in this manual, and
2. Maintain your machine regularly as stated in this manual.



WARNING: The engine exhaust from this product contains chemicals known to the State of California to cause cancer, birth defects or other reproductive harm. Operate in well ventilated area only. Engine exhaust is deadly.



SAFETY PRECAUTIONS

- High operating temperatures of Sealant and Machine require protective clothing and gloves be worn by operator.



- Always wear eye protection.

- Observe all **CAUTION AND WARNING** signs posted on machine.



- Avoid the entrance of water into any part of the machine. Water will displace heat transfer oil or sealant, which could be hazardous to personnel surrounding the machine when it reaches operating temperatures.

- Avoid bodily contact with hot sealant material or heat transfer oil; serious burns may result.

- Read Operator Manual thoroughly before operating machine.

- Make sure operator is familiar with machine operation.

- Do not operate in closed building or confined areas.

- Shut-down burner and engine prior to refilling LPG Tanks.

- When adding solid material to sealant tank, stop mixer, lift lid, place material onto lid and close lid before restarting mixer. Hot material could splash and cause serious burns if this procedure is not followed.

- Keep hands, feet, and clothing away from all moving parts.

- Always keep a fire extinguisher near the unit. Maintain extinguisher properly and be familiar with its use.



- **DO NOT** exceed 525° F. for heat transfer oil temperature.

- **DO NOT** overfill heat transfer oil level. Expansion of oil during heat up could cause overflow. With machine in level position, check oil each day before starting burner, add oil to top mark on dipstick if required (at 70° F.) **Use only recommended heat transfer oil and change after 500 hours of operation or one year, whichever occurs first.**

- Follow operating instructions for starting and shut-down of burner. Instructions are mounted on control box.

- Calibrate temperature control prior to initial operation and each 50 hours of operation.

SAFETY PRECAUTIONS

- Replace any hoses which show signs of wear, fraying, or splitting. Be sure all fittings and joints are tight and leak-proof.
- Precaution is the best insurance against accidents.
- The applicator should not be left unattended with burner lit.
- Tighten all bolts and screws after every 100 hours of operation.
- CrafcO, Inc. assumes no Liability for an accident or injury incurred through improper use of the machine.



POLYPATCH 1 TON APPLICATOR LIMITED WARRANTY

CrafcO, Inc., through its authorized distributor, will replace for the original purchaser free of charge any parts found upon examination by the factory at Mesa, Arizona, to be defective in material or workmanship. This warranty is for a period within 60 days of purchase date, but excludes engine or components, tires, and battery as these items are subject to warranties issued by their manufacturers.

After 60 days, CrafcO, Inc. warrants structural parts, excluding heating system, hydraulic components, hot oil pump and electrical components for a period of one (1) year from date of delivery. CrafcO, Inc., shall not be liable for parts that have been damaged by accident, alteration, abuse, improper lubrication/maintenance, normal wear, or other cause beyond our control.

The warranty provided herein extends only to the repair and/or replacement of those components on the equipment covered above and does not cover **labor** costs. The warranty does not extend to incidental or consequential damages incurred as a result of any defect covered by this warranty.

All transportation and labor costs incurred by the purchaser in submitting or repairing covered components must be born by the purchaser.

CrafcO, Inc. specifically disavows any other representation, warranty, or liability related to the condition or use of the product.



WARNING: Use of replacement parts other than genuine CrafcO parts may impair the safety or reliability of your equipment and nullifies any warranty.

WARRANTY CLAIM INSTRUCTIONS

Please follow the instructions stated below when calling in a Warranty Claim. Failure to follow these procedures may be cause to void the warranty.

1. Call your local CrafcO Distributor. If you do not know who your local distributor is, call a CrafcO Customer Service Representative, (Toll Free 1-800-528-8242) for name, location, and telephone number.
2. On contacting the Distributor, be prepared to identify the machine type, model number, and serial number, also, the date of purchase if available.
3. Should the cause of the malfunction be a defective part, the Distributor will advise you of the procedure to follow for a replacement.
4. The warranty is valid only for parts, which have been supplied or recommended by CrafcO, Inc.

If you have any additional questions regarding warranty repairs and parts, please do not hesitate to call toll free 1-800-528-8242.

CRAFCO, INCORPORATED
235 SOUTH HIBBERT DRIVE
MESA, AZ. 85210
480-655-8333
480-655-1712 (FAX)
Toll Free 1-800-528-8242

SPECIFICATIONS

| | |
|-------------------------------------|--|
| Vat Capacity..... | 1 U.S. Ton |
| Heat Transfer Oil Required..... | 45 Gallons at 70° F |
| Tank Construction..... | Double Boiler Type |
| Tank Opening Size..... | 18" X 24" |
| Maximum Heat Input..... | Vapor Burner 250,000 BTU |
| Burner and Temperature Control..... | Automatic - Fail Safe |
| Engine - Kohler..... | Single Cylinder |
| Model CH11 - Propane Fueled | 11 BHP @ 3,600 rpm |
| Drive Mechanism..... | Hydraulic with infinite mixer speed control |
| Mixer..... | Full Sweep Mixer with 2 horizontal paddles - vertical risers |
| Axle (2)..... | 3,500 lb.capacity each |
| Tires (4)..... | 185R-14-8 ply rating (1850 lbs. capacity each) |
| Dry Weight..... | Approximately 3,400 lbs. |
| Propane Bottle (2)..... | 100 lbs. - each |

POLYPATCH 1 TON APPLICATOR OPERATING INSTRUCTIONS INTRODUCTION

The Crafcro PolyPatch Applicator was developed to melt Crafcro Brand PolyPatch material.

DO NOT operate machine without following these instructions:

1. Fill propane tanks if necessary.
2. Check engine crankcase oil level (refer to Engine Operators Manual).
3. Check hydraulic fluid level, at ambient temperature. Add fluid if necessary to bring to correct level. Oil should be in middle of top sight gauge.
4. Check heat transfer oil level. At 70° F. oil should be touching the dipstick. **DO NOT** overfill or spillage may occur when oil is heated and expands.
5. Temperature thermostat set in “**OFF**” position.
6. Applicator and Gate valves should be in the closed position.
7. Remember that safe operation of this equipment is the operators responsibility.



CAUTION:

Extreme care must be used when operating this equipment. Safety is the result of being careful and paying attention to details. Remember the propane flame is about 2,200° F. Certain exposed parts of this machine, when operating reach 500° F; the sealant as high as 400° F. and the hydraulic fluid may reach 200° F. Always wear protective clothing, hard-soled shoes, and eye protection. Be sure that all joints and fittings are tight and leak proof. Immediately replace any hose which shows any signs of wear, fraying, or splitting. Tighten all bolts, nuts, and screws every 250 hours.

MACHINE START UP

TO START BURNER

1. Fully open the damper vent.
2. Set temperature dial to “OFF”.
3. Open both LPG tank and ball valves and ball valve located above burner control box.
4. Start engine by turning the ignition key to the start position. Engine should start. If engine does not start, try starting again. After engine starts, allow to warm up before using hydraulics.
5. Open burner control box. Turn temperature dial to desired temperature setting.



CAUTION:

If burner does not ignite the first time, turn temperature dial to “OFF”. After 10 seconds turn temperature dial to desired setting. Burner should ignite. If burner still fails to ignite, determine cause of malfunction (see “Trouble Shooting Guide”).

6. Allow the heating oil to heat. Fifteen minutes after hot oil reaches 500° F, engage the mixer by moving the mixer control handle forward or backward. If the mixer does not move, allow material to heat longer. Jamming of mixer shaft causes hydraulic oil to overheat and machine damage could occur. Set the mixer speed by moving the mixer control handle further from the neutral position. The further the handle engagement, the higher the mixer speed. It is best to have mixer speed approximately 10RPM.

APPLYING THE MATERIAL

NOTE: Hot materials can cause severe burns. Wear protective clothing, gloves, hard-soled shoes, and face shield or safety glasses when operating or filling the equipment. Read entire manual before operating.

7. When material is mixing freely and the correct application temperature (375° F.-410° F.) is reached, open drain valve (labeled) by removing locking pin (1) and lowering drain valve handle (2) (see Fig. 1). When drain valve handle is fully opened the locking pin should be replaced to maintain opened position.
8. Position machine over desired work area and remove locking pin (1) in applicator shoot (2) (see Fig. 2). Removing locking pin enables the shoot to rotate approximately 180° for easy access to the work area.
9. With shoot positioned over work area, slowly open applicator valve (labeled) (3) (see Fig. 2) by lifting valve handle and applying material as needed. If material fails to flow from the applicator valve, use hand torch supplied with applicator to heat valve and plumbing until material begins to flow. When the proper amount of material has been applied to the work area, firmly lower the applicator valve handle to stop material flow.
10. **When transporting machine long distances with hot material in tank, always close and lock the drain valve. This will prevent product from plugging the pipe and applicator valve. Also, when transporting unit with hot material in tank, the mixer should be engaged until material temperature cools to 250° F or material separation will occur. Never leave burner turned on when transporting machine.**

MACHINE START UP

APPLYING THE MATERIAL

11. Continue to monitor material (1) (see Fig. 3) for proper application temperature and adjust hot oil temperature as needed. **Hot Liquid Material Causes Severe Burns!**
12. When transporting applicator with hot material always close and lock drain valve. Closing the drain valve prevents excessive build-up in plumbing. **Always keep mixer engaged when transporting applicator with hot liquid material to prevent material segregation.**
13. Continue to monitor material for proper application temperature and make burner adjustments as needed.

LOADING THE MACHINE

When loading solid material into the sealant tank, the mixer must be momentarily stopped, the lid lifted, the material placed on the lid, and the lid closed again before the mixer is restarted. Following this procedure will prevent the hot material from splashing and causing serious burns to personnel.

The solid material must be added at intervals, which will allow the mixer to rotate without jamming. If blocks of material are fed in too quickly, jamming will result and it will slow down the melting process.

SHUTDOWN AND CLEAN-OUT PROCEDURE

1. Turn the temperature dial to “**OFF**”.
2. Return mixer to “**OFF**” position (once applicator is stationary).
3. Turn engine to “**OFF**”.
4. If drain valve is not closed due to transporting applicator, firmly close and replace locking pin.
5. Open applicator valve to drain remaining material from valve and plumbing. When finished draining firmly close applicator valve.
6. Clean material residual from applicator chute by heating the underside of chute with hand torch (see Fig. 2)
7. Return applicator chute to transport position and secure with locking pin.
8. Close LPG line ball valves and close LPG cylinder valve.

OVERNIGHT HEATERS

Overnight heaters may be used to maintain an overnight hot oil temperature of approximately 200-250°F (93.3°C).

Attach each heater to a 120 volt outlet using power cords sufficient for 1500 watts. Use separate cord for each heater and make sure receptacles are rated for 1500 watts. It is advisable to use a separate fused circuit for each heater. Disconnect heaters when using machine burner system.

INSIDE PIVOT GATE

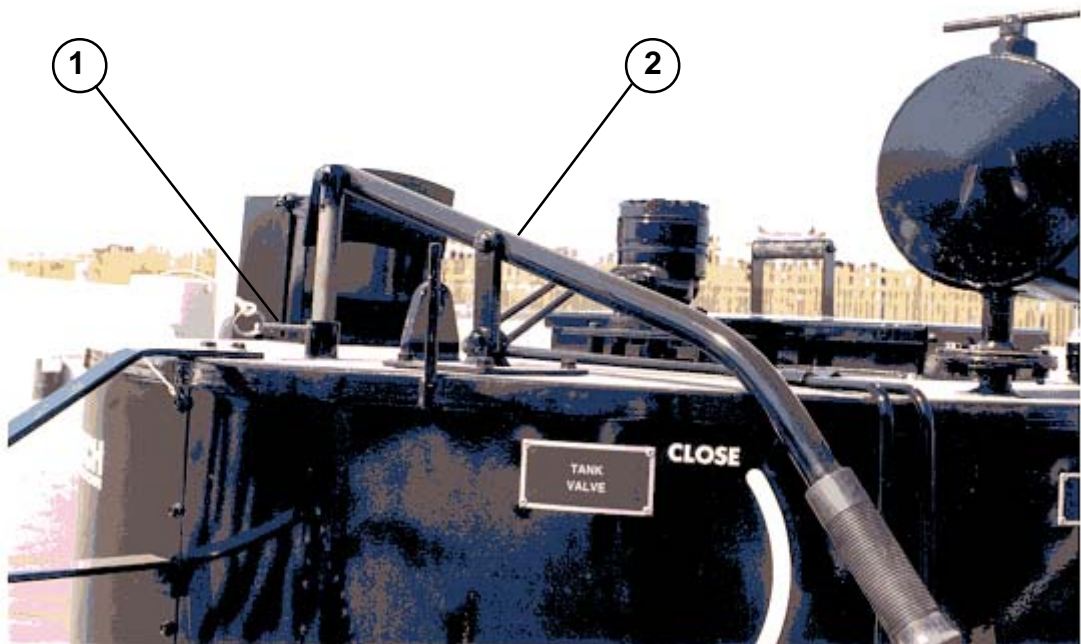


FIGURE 1

POLYPATCH MATERIAL TROUGH ASSEMBLY - 44680

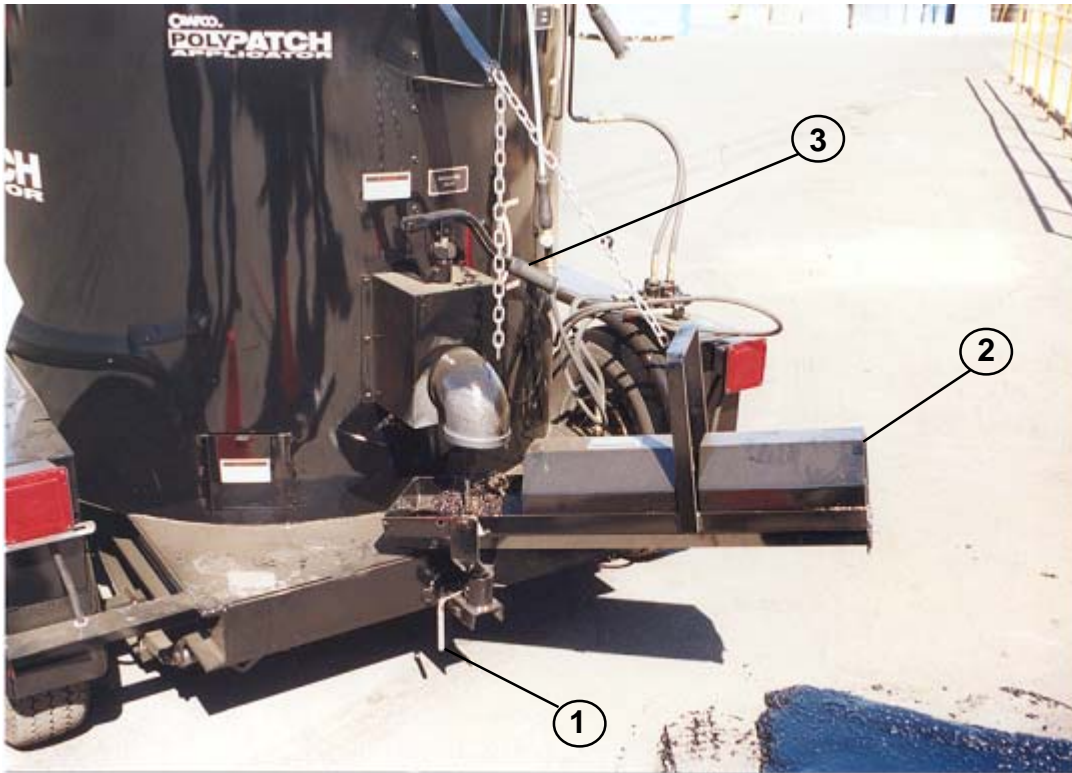


FIGURE 2

POLYPATCH CONTROL BOX ASSEMBLY - 44690



FIGURE 3

STORING MACHINE

The PolyPatch machine should be stored in an area where moisture cannot enter the heating system. Extended down time can cause moisture build up in heating oil tank.

If there is any suspicion that moisture may have collected in heat transfer oil, warm heat transfer fluid to 300° F. for 2 to 3 hours to evaporate any moisture.

INSTRUCTION FOR ORDERING PARTS

Parts may be ordered from your local Crafcro distributor or directly from Crafcro, Inc. if a distributor is not available in your area. When ordering parts, give the following information:

1. Part Number
2. Machine Model
3. Serial Number from Name Plate

Write, telephone, or fax:

CRAFCO, INC.
235 SOUTH HIBBERT
MESA, AZ 85210
480-655-8333
480-655-1712 (FAX)
Toll Free: 1-800-528-8242

MAINTENANCE INSTRUCTIONS

ENGINE:

- Check oil every 8 hours of operation. Change after the first 5 hours of operation and change every 25 hours thereafter.
- See Engine Owners Manual for additional operating and maintenance instructions.

HYDRAULIC SYSTEM:

Check hydraulic fluid every 8 hours. Change hydraulic filter after first 10 hours of operating and every 250 hours thereafter. Change hydraulic fluid every 500 hours of operation.

WHEEL BEARINGS:

Re-pack wheel bearings every 24,000 miles or every two years, using a good grade of bearing grease.

TONGUE JACK:

Lubricate tongue jack, using a good grade of bearing grease.

MAINTENANCE CHART

| | | HOURS | | | |
|--------------------------|--|--|----|-----|-----|
| LOCATION | PROCEDURE | 8 | 50 | 100 | 500 |
| Engine check oil level. | See Engine Instruction Manual. | | | | |
| Other engine maintenance | See "Engine Operating and Maintenance Instructions." | | | | |
| Battery | Check water level weekly. | | | | |
| Heat transfer oil | Check | * | | | |
| | Change | | | | * |
| Hydraulic oil filter | First change (10 hours). | | | | |
| | Subsequent changes (250 hours). | | | | |
| Hydraulic oil | Check oil | * | | | |
| | Change oil | | | | * |
| | For proper oil, see "Recommended Fluids & Lubricants". | | | | |
| Wheel bearings | Clean & re-pack using a good grade of bearing grease. | Every 24,000 miles or every two years. | | | |
| Tongue jack | Grease, using good grade of bearing grease. | Once a year | | | |

SERVICE INSTRUCTIONS

1. Conduct a general inspection of your machine at least once a week. Replace all worn or damaged parts, make any necessary adjustments and tighten all loose nuts or screws.



2. Keep regular replacement items in stock for emergency repairs, to avoid costly “down” time.
3. Watch for leaks. Tighten fitting or repair as necessary.
4. Clean machine externally periodically. Check with sealant manufacturer for recommendation.
5. Follow “Recommended Maintenance Procedures” on Maintenance Chart.

RECOMMENDED FLUIDS & LUBRICANTS

| APPLICATION | RECOMMENDED | FULL POINT |
|-------------------|-------------------------------|------------|
| Engine Oil | Refer to Kohler owners manual | 2 Qts. |
| LPG | Propane | 100 Lbs. |
| Hydraulic Oil | Rondo oil - HD-68 Texaco | 10 Gal. |
| Heat Transfer Oil | Regal R&O 68 | 45 Gal. |

The following is a list of suitable Heat Transfer Oils to be used in CrafcO equipment.

| PRODUCER | PRODUCT NAME | PRODUCT NO. |
|-----------------|---------------------------|-------------|
| Texaco | Regal | R&O 68 |
| Exxon | Caloria | HT 43 |
| Arco | Rubilene | - |
| Citgo | Sentry | R&O 68 |
| Gulf Oil Co. | Security | R&O 68 |
| Shell Oil Co. | Thermia | C |
| Chevron Oil Co. | Chevron Heat Transfer Oil | - |
| Conoco | Heat Transfer Oil | R&O 68 |



WARNING:

The Heat Transfer Oil in this machine is a grade that has been tested and recommended by CrafcO, Inc. The addition of any grade of oil not specifically recommended by CrafcO, Inc. shall be cause for the warranty to be void. All oils subjected to high temperatures deteriorate with time and lose many of their characteristics. Test conducted by CrafcO, Inc. have determined that for best results and safety, the Heat Transfer Oil in this machine must be drained and replaced with CrafcO, Inc. recommended oil after five hundred (500) hours of operation or one (1) year, whichever occurs first.

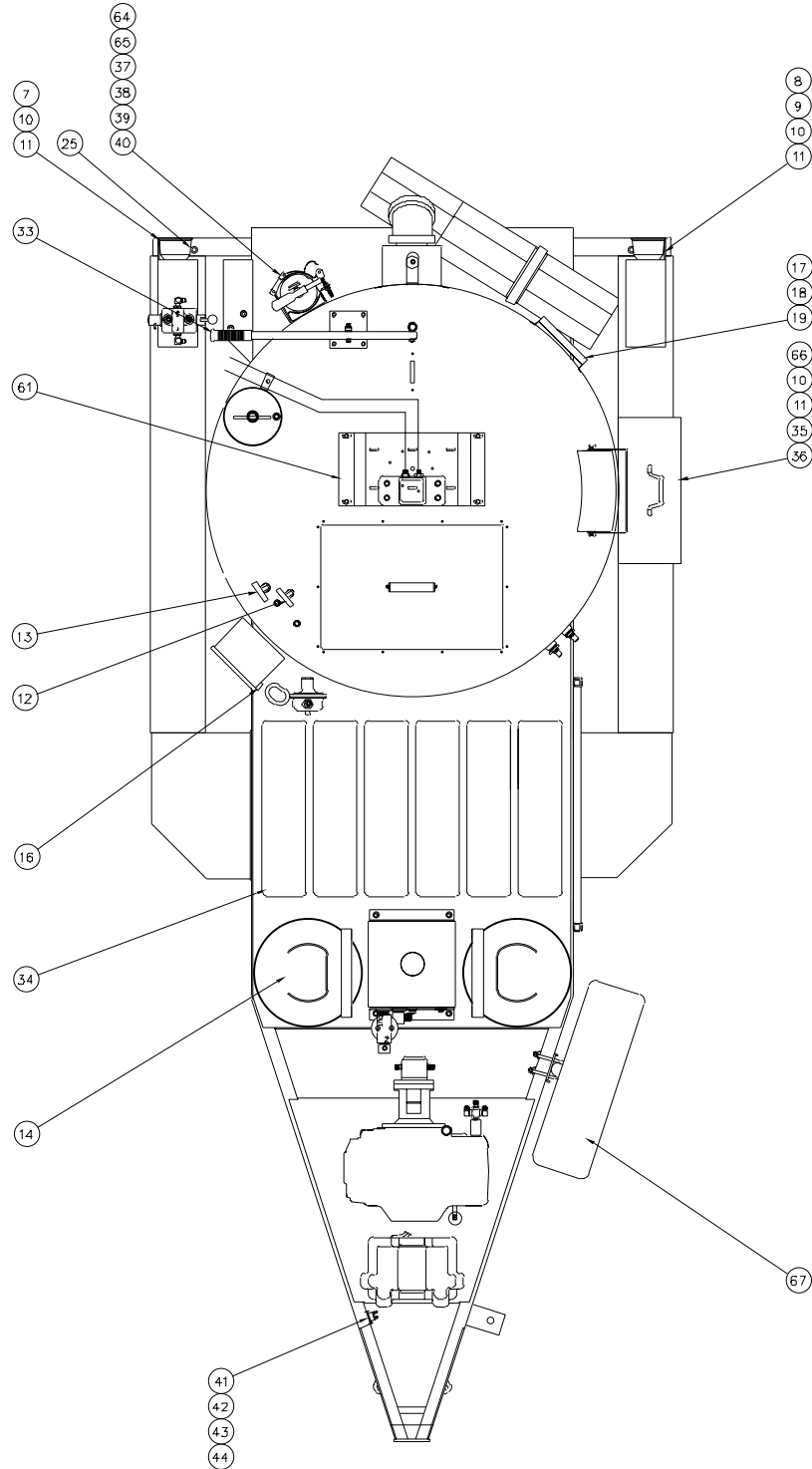
TROUBLE SHOOTING HYDRAULICS GUIDE

| PROBLEM | CAUSE | REMEDY |
|--------------------------|--|--|
| Mixer will not rotate. | Sealant temperature too low. | Continue to heat material. |
| | Too many blocks placed at one time. | Continue to heat material. |
| | Inadequate hydraulic flow/pressure. | Check hydraulic fluid level. Reset pressure/check flow if necessary. |
| Slow heat up of sealant. | Build up of coked material on inside of material tank. | Allow machine to cool. Remove deposits and flush with solvent. |
| | Burner not operating/low LPG pressure. | Repair/Adjust |
| | Low heating oil level. | Make sure fluid level is correct. |
| | Low heating oil temperature. | Set at recommended temperature. |

BURNER TROUBLE SHOOTING GUIDE

| SEE BURNER MANUAL FOR ADJUSTMENTS AND INSTRUCTIONS | | |
|---|--|---|
| PROBLEM | CAUSE | SOLUTION |
| Burner will not ignite. | Fuse is "blown", broken wire from battery. | Check for 12 volts at Thermostatic switch (side from battery). |
| | Thermostat is bad. | Check for 12 volts at terminal out of thermostat. |
| | Broken wire from thermostat to Spark Control Module. | Check for 12 volts at "Power" on Spark Control Module. |
| | Bad Spark Control Module. | Check for 12 volts at "Valve" terminal on Spark Control Module. |
| | -Faulty ignitor or ignitor wire. -Reposition ignitor. -Check for clogged burner orifice. -Inadequate gas flow/or pressure. -Faulty "ASCO" gas valve. | Faulty Spark Control Module. |
| Burner lights but shuts down in 3.5 seconds. | -Faulty ignitor. -Broken or loose flame sensor wire. -Faulty spark control module. | |
| Make sure engine is running so battery is fully charged. | | |
| Burner lights but will not re-light. | -Calibrate thermostat. -Blown fuse. -Faulty spark control module. -Faulty sensor. | |
| Burner will not shut off at temperature setting. | -Calibrate thermostat. -Dirt in "ASCO" valve. | |

POLYPATCH 1 TON PROPANE MELTER ASSEMBLY-44600-1PB
(Parts shown in drawing are located on pages 24, 25, and 27.)



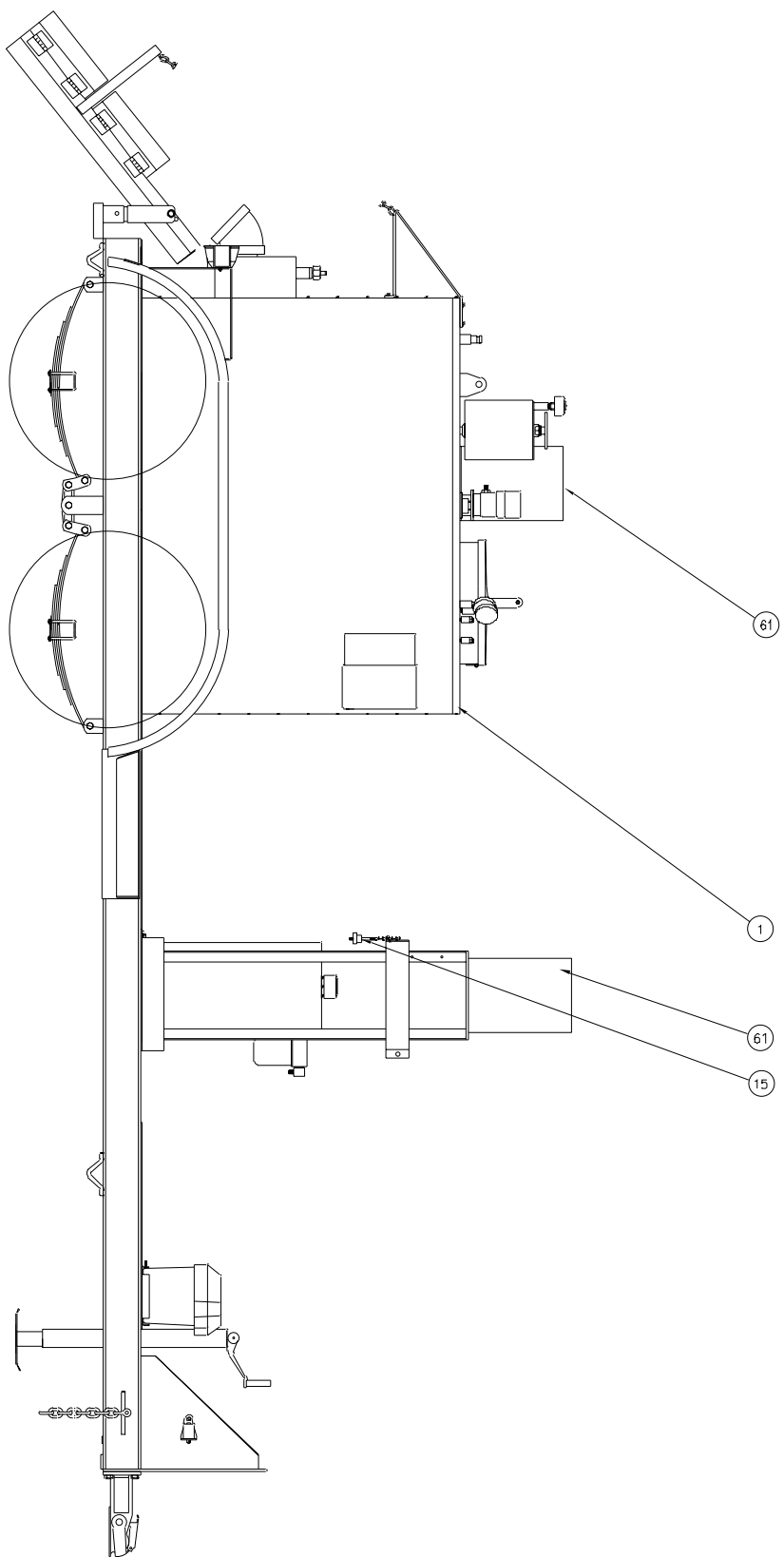
POLYPATCH 1 TON PROPANE MELTER ASSEMBLY-44600-1PB

| NUMBER | PART NUMBER | QTY | DESCRIPTION |
|---------------|--------------------|------------|---------------------------|
| 1 | 44601 | 1 | TANK AND FRAME ASSY. |
| 2 | 28827 | 4 | 5/8-11 X 1-3/4 GR. 8 BOLT |
| 3 | 28541 | 4 | 5/8-11 UPSET LOCK NUT |
| 4 | 20130 | 2 | 48" SAFETY CHAIN |
| 5 | 23117 | 1 | BREAKAWAY SWITCH |
| 6 | 24000 | 1 | 12V BATTERY |
| 7 | 24022 | 1 | TAIL LIGHT, R.H. |
| 8 | 24023 | 1 | TAIL LIGHT, L.H. |
| 9 | 26099 | 1 | LICENSE PLATE HOLDER |
| 10 | 28500 | 8 | 1/4-20 HEX NUT |
| 11 | 28645 | 8 | 1/4 LOCK WASHER |
| 12 | 40078 | 1 | 12" MAT'L TEMP. GAUGE |
| 13 | 41243 | 1 | 24" OIL TEMP. GAUGE |
| 14 | 25118 | 2 | 100# PROPANE TANK |
| 15 | 26032 | 2 | 1/2-13 KNOB |
| 16 | 25268 | 2 | CONTROL BOX CLAMP |
| 17 | 25290 | 1 | RECORD BOX BRACKET |
| 18 | 25289 | 1 | RECORD BOX |
| 19 | 28990 | 52 | 1/8" RIVET |
| 20 | 26009 | 14GL. | HYDRAULIC OIL |
| 21 | 26010 | 50GL. | HEATING OIL |
| 22 | 26071 | 10 | WHITE WIRE TIE |
| 23 | 26072 | 10 | SMALL BLACK WIRE TIE |
| 24 | 26073 | 10 | LARGE BLACK WIRE TIE |
| 25 | 26076 | 4 | 9/16" I.D. GROMMET |

POLYPATCH 1 TON PROPANE MELTER ASSEMBLY-44600-1PB

| NUMBER | PART NUMBER | QTY | DESCRIPTION |
|---------------|--------------------|------------|--------------------------|
| 26 | 27520 | 0.5 | RED GASKET SILICON |
| 27 | 28982 | 2 | 3/16" RIVET |
| 28 | 32501 | 6' | 3/8" CONVOLUTED LOOM |
| 29 | 32502 | 2' | 1/2" CONVOLUTED LOOM |
| 30 | 44602 | 1 | DECAL KIT |
| 31 | 51653 | 3 | 3/8" LOOM TEE |
| 32 | 51654 | 7 | 3/8" LOOM END FITTING |
| 33 | 32081 | 2 | RUBBER HANDLE |
| 34 | 44611 | 6 | ANTISLIP STRIP |
| 35 | 28670 | 8 | 1/4 FLAT WASHER |
| 37 | 28716 | 4 | 5/16-18 X 1 BOLT |
| 38 | 28671 | 4 | 5/16 FLAT WASHER |
| 39 | 28646 | 4 | 5/16 LOCK WASHER |
| 40 | 28501 | 4 | 5/16-18 HEX NUT |
| 41 | 31512 | 1 | 30 AMP CIRCUIT BREAKER |
| 42 | 28844 | 2 | #10-32 X 3/4" RDHD SCREW |
| 43 | 28554 | 2 | #10-32 HEX NUT |
| 44 | 28644 | 2 | #10 LOCK WASHER |

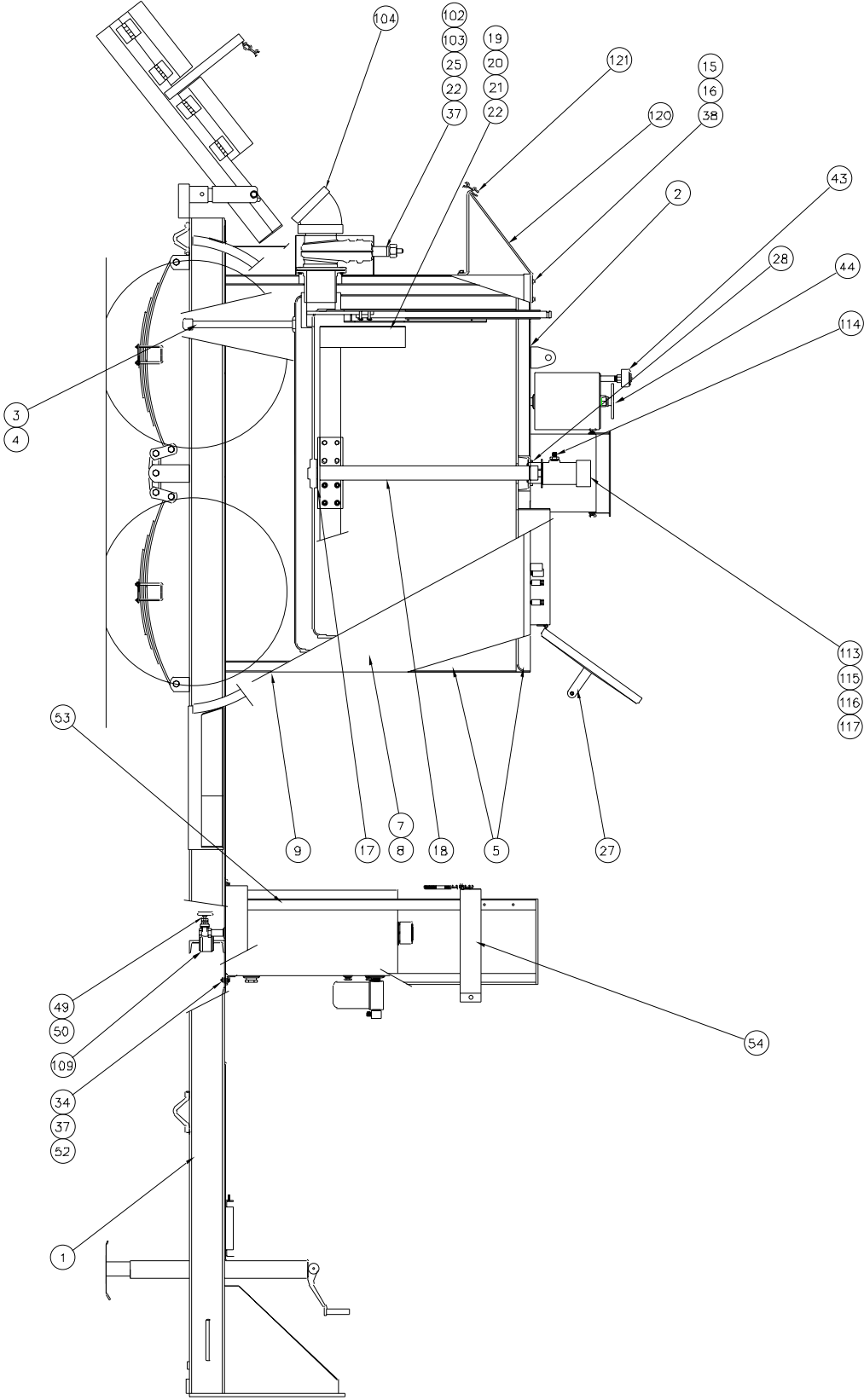
POLYPATCH 1 TON PROPANE MELTER ASSEMBLY
OPTIONAL COMPONENTS-44600-2PB
(Parts not shown in drawing are listed on page 27.)



**POLYPATCH 1 TON PROPANE MELTER ASSEMBLY
OPTIONAL COMPONENTS-44600-2PB**

| NUMBER | PART NUMBER | QTY | DESCRIPTION |
|---------------|--------------------|------------|---------------------------|
| 51 | 20017 | 1 | 2" BALL HITCH |
| | 20013 | 1 | 4 POS. PINTLE HITCH |
| | 20014 | 1 | 3" PINTLE |
| | 20015 | 1 | PIN HITCH |
| | 20016 | 1 | 2 1/2" PINTLE |
| | 20018 | 1 | 2 5/16" BALL HITCH |
| 52 | 20140 | 1 | 28" HITCH EXTENSION |
| | 20150 | 1 | 39" HITCH EXTENSION |
| 53 | 23097C | 1 | JACK CASTER WHEEL |
| 54 | 23119 | 1 | TRUCK BREAK CONTROLLER |
| 55 | 24002 | 1 | BATTERY BOX |
| | 24086 | 1 | LOCKABLE BATTERY BOX |
| 56 | 24068 | 1 | 4 WIRE TRAILER CONNECTOR |
| | 24184 | 1 | 5 WIRE TRAILER CONNECTOR |
| | 24074 | 1 | 6 WIRE TRAILER CONNECTOR |
| | 24084 | 1 | 7 WIRE TRAILER CONNECTOR |
| 57 | 24069 | 1 | 4 WIRE TRUCK CONNECTOR |
| | 24075 | 1 | 6 WIRE TRUCK CONNECTOR |
| 58 | 24085 | 1 | SPRING GUARD FOR 24084 |
| 59 | 24095K | 1 | STROBE LIGHT KIT |
| 60 | 24096K | 1 | FLASH BAR KIT |
| 61 | 44644 | 1 | FLASH LIGHT BRACKET |
| 62 | | | |
| 63 | | | |
| 64 | 26058 | 1 | FIRE EXTINGUISHER W/COVER |
| 65 | 26059 | 1 | EXTINGUISHER BRACKET |
| 66 | 26098 | 1 | TOOL BOX |
| 67 | 44610 | 1 | SPARE TIRE MOUNTING KIT |

POLYPATCH 1 TON PROPANE TANK AND FRAME ASSY-44601-1PB



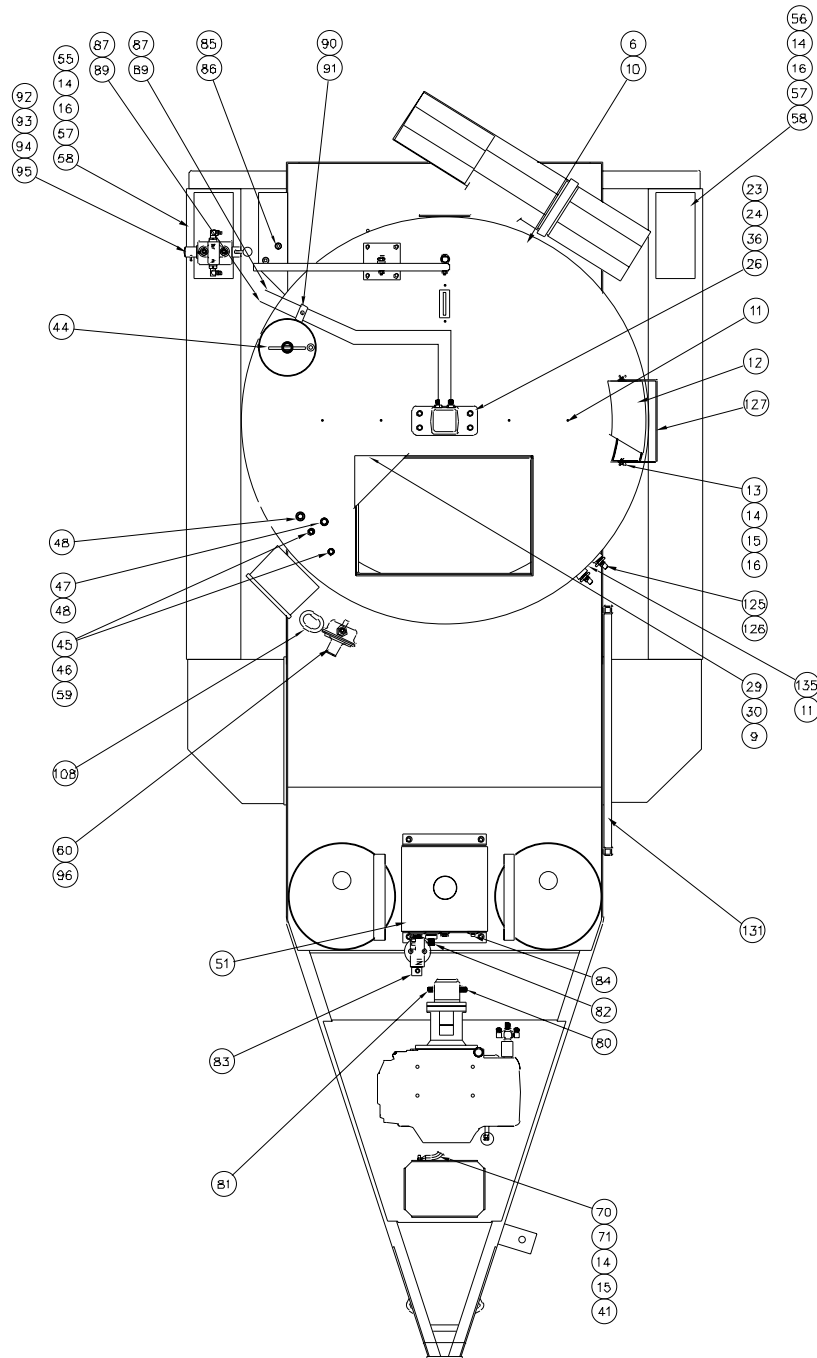
POLYPATCH 1 TON PROPANE TANK AND FRAME ASSY-44601-1PB

| NUMBER | PART NUMBER | QTY | DESCRIPTION |
|---------------|--------------------|------------|--------------------------|
| 1 | 44605 | 1 | FRAME ASSEMBLY |
| 2 | 44625 | 1 | MELTING TANK ASSEMBLY |
| 3 | 28174 | 1 | 1" X 15" NIPPLE |
| 4 | 28270 | 1 | 1" PIPE CAP |
| 5 | 40068 | 2 | 1" KAOWOOL INSULATION |
| 6 | 44618 | 1 | TOP COVER |
| 7 | 44619 | 1 | SKIN WRAPPER, L.H. |
| 8 | 44620 | 1 | SKIN WRAPPER, R.H. |
| 9 | 28985 | 20 | 1/4" SELF-TAPPING SCREW |
| 10 | 28993 | 8 | 3/16" DIA. RIVET |
| 11 | 28990 | 26 | 1/8" DIA. RIVET |
| 12 | 41183 | 1 | VENT COVER ASSEMBLY |
| 13 | 28619 | 2 | 5/16-18 WING NUT |
| 14 | 28671 | 12 | 5/16 FLAT WASHER |
| 15 | | | |
| 16 | | | |
| 17 | 28682 | 1 | WASHER |
| 18 | 41190 | 1 | AGITATOR SHAFT |
| 19 | 41070 | 2 | PADDLE ASSEMBLY |
| 20 | 28984 | 8 | 3/8-16 X 1 1/2 GR.8 BOLT |
| 21 | 28641 | 16 | 3/8 FLAT HARDENED WASHER |
| 22 | 28538 | 16 | 3/8-16 UPSET LOCK NUT |
| 23 | 44614 | 1 | AGIT. MOTOR MOUNT. PLATE |
| 24 | 40030 | 4 | PIPE SPACER |
| 25 | 28731 | 14 | 3/8-16 X 1 BOLT |

POLYPATCH 1 TON PROPANE TANK AND FRAME ASSY-44601-1PB

| NUMBER | PART NUMBER | QTY | DESCRIPTION |
|---------------|--------------------|------------|-------------------------|
| 26 | 28647 | 10 | 3/8 LOCK WASHER |
| 27 | 41195 | 1 | INTAKE LID ASSEMBLY |
| 28 | 41757 | 1 | TUBE RING |
| 29 | 26104 | 2 | 1/4" X 2 1/2" LOCK PIN |
| 30 | 44157 | 3 | PIN ATTACHMENT CABLE |
| 31 | 51158 | 1 | HANDLE BAR |
| 32 | 44664 | 1 | ROCKER |
| 33 | 44665 | 1 | LEVER BASE ASSEMBLY |
| 34 | 28733 | 5 | 3/8-16 X 1 1/2 BOLT |
| 35 | 28735 | 1 | 3/8-16 X 2 BOLT |
| 36 | 28736 | 5 | 3/8-16 X 2 1/2 BOLT |
| 37 | 28672 | 18 | 3/8 FLAT WASHER |
| 38 | 28608 | 7 | 5/16-18 THREADED INSERT |
| 39 | | | |
| 40 | | | |
| 41 | | | |
| 42 | 43355 | 1 | OVERFLOW TANK ASSEMBLY |
| 43 | 26025 | 1 | AIR BREATHER |
| 44 | 43673 | 1 | DIPSTICK |
| 45 | 28177 | 2 | 3/8" PIPE COUPLING |
| 46 | 25203 | 2 | STUFFING BOX |
| 47 | 28345 | 1 | 3/8 X 1/2 NPT BUSHING |
| 48 | 28178 | 2 | 1/2 PIPE COUPLING |
| 49 | 28018 | 1 | 1/2 X 2" PIPE NIPPLE |
| 50 | 29213 | 1 | 1/2" BALL VALVE |

POLYPATCH 1 TON PROPANE TANK AND FRAME ASSY-44601-2PB



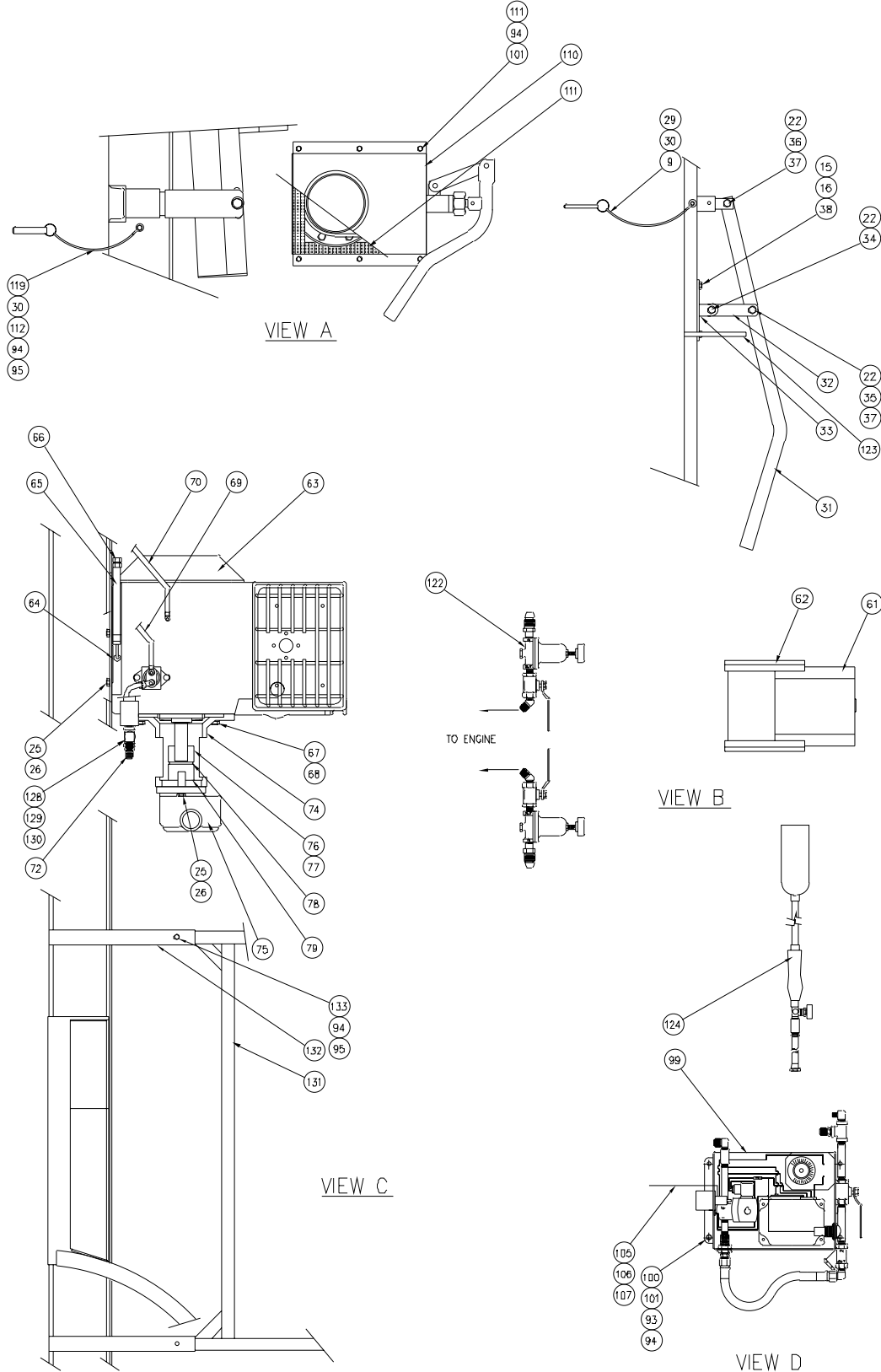
POLYPATCH 1 TON PROPANE TANK AND FRAME ASSY-44601-2PB

| NUMBER | PART NUMBER | QTY | DESCRIPTION |
|---------------|--------------------|------------|---------------------------|
| 51 | 44030 | 1 | HYDRAULIC TANK ASSEMBLY |
| 52 | 28526 | 4 | 3/8-16 ESNA LOCK NUT |
| 53 | 41259 | 2 | LP TANK BRACKET |
| 54 | 25085 | 2 | UPPER RETAINING BAND |
| 55 | 41171 | 1 | R.H. FENDER ASSEMBLY |
| 56 | 41170 | 1 | L.H. FENDER ASSEMBLY |
| 57 | 28525 | 8 | 5/16-18 ESNA LOCK NUT |
| 58 | 28681 | 8 | 5/16 FENDER WASHER |
| 59 | 28342 | 2 | 1/4 X 3/8 NPT BUSHING |
| 60 | 41082 | 1 | GAS REGULATOR |
| 61 | 40006 | 1 | SLIDING DOOR |
| 62 | 40009 | 2 | DOOR SLIDE BRACKET |
| 63 | 43480 | 1 | 11 HP KOHLER ENGINE |
| 64 | 29834 | 1 | 3/8 NPT X 3/8 JIC ADAPTOR |
| 65 | SEE DESC. | 1 | AX6-6MP-6F J9-8 HOSE |
| 66 | 28267 | 1 | 3/8 PIPE CAP |
| 67 | 28648 | 4 | 7/16 LOCK WASHER |
| 68 | 28747 | 4 | 7/16-14 X 1 1/4 BOLT |
| 69 | 24015 | 1 | POSITIVE BATTERY CABLE |
| 70 | 37038 | 1 | NEGATIVE BATTERY CABLE |
| 71 | 32602 | 1 | NEGATIVE BATTERY CABLE |
| 72 | 29839 | 2 | 3/8 JIC X 1/4 NPT ADAPTOR |
| 73 | 29870 | 1 | 1/4 JIC X 1/4 NPT ELBOW |
| 74 | 41583 | 1 | HYD. PUMP ADAPTOR |
| 75 | 41094 | 1 | HYDRAULIC PUMP |

POLYPATCH 1 TON PROPANE TANK AND FRAME ASSY-44601-2PB

| NUMBER | PART NUMBER | QTY | DESCRIPTION |
|---------------|--------------------|------------|---------------------------|
| 76 | 42695 | 1 | 1" BORE COUPLING |
| 77 | 27017 | 1 | SHAFT KEY |
| 78 | 42696 | 1 | COUPLING SPIDER |
| 79 | 41167 | 1 | 5/8" BORE COUPLING |
| 80 | 29819 | 1 | 3/4 JIC X 3/4 O'R ADAPTOR |
| 81 | 29812 | 1 | 5/8 JIC X 5/8 O'R ADAPTOR |
| 82 | 40921 | 1 | 1 JIC X 1 NPT ADAPTOR |
| 83 | 29945 | 1 | 5/8 JIC X 1 NPT ELBOW |
| 84 | 28281 | 1 | 1/4 PIPE PLUG |
| 85 | 29809 | 2 | 3/8 X 5/8 TUBE REDUCER |
| 86 | 29810 | 2 | 5/8 TUBE NUT |
| 87 | 41155 | 1 | L.H. TUBE ASSEMBLY |
| 88 | 41156 | 1 | R.H. TUBE ASSEMBLY |
| 89 | 29808 | 2 | 3/8 TUBE ADAPTOR |
| 90 | 41236 | 1 | TUBE CLAMP |
| 91 | 28998 | 1 | #10 X 1 PAN HEAD SCREW |
| 92 | 41093 | 1 | HYDRAULIC VALVE ASSY. |
| 93 | 28704 | 4 | 1/4-20 X 1 1/2 BOLT |
| 94 | 28645 | 16 | 1/4 LOCK WASHER |
| 95 | 28500 | 6 | 1/4-20 HEX NUT |
| 96 | 29832 | 1 | 3/8 JIC X 1/2 NPT ADAPTOR |
| 97 | 26560 | 1 | HYD. KIT AND SCHEMATICS |
| 98 | 26561 | 1 | LPG KIT AND DIAGRAM |
| 99 | 44690 | 1 | CONTROL BOX ASSEMBLY |
| 100 | 50074 | 4 | CONTROL BOX SPACER |

POLYPATCH 1 TON PROPANE TANK AND FRAME ASSY-44601-3PB



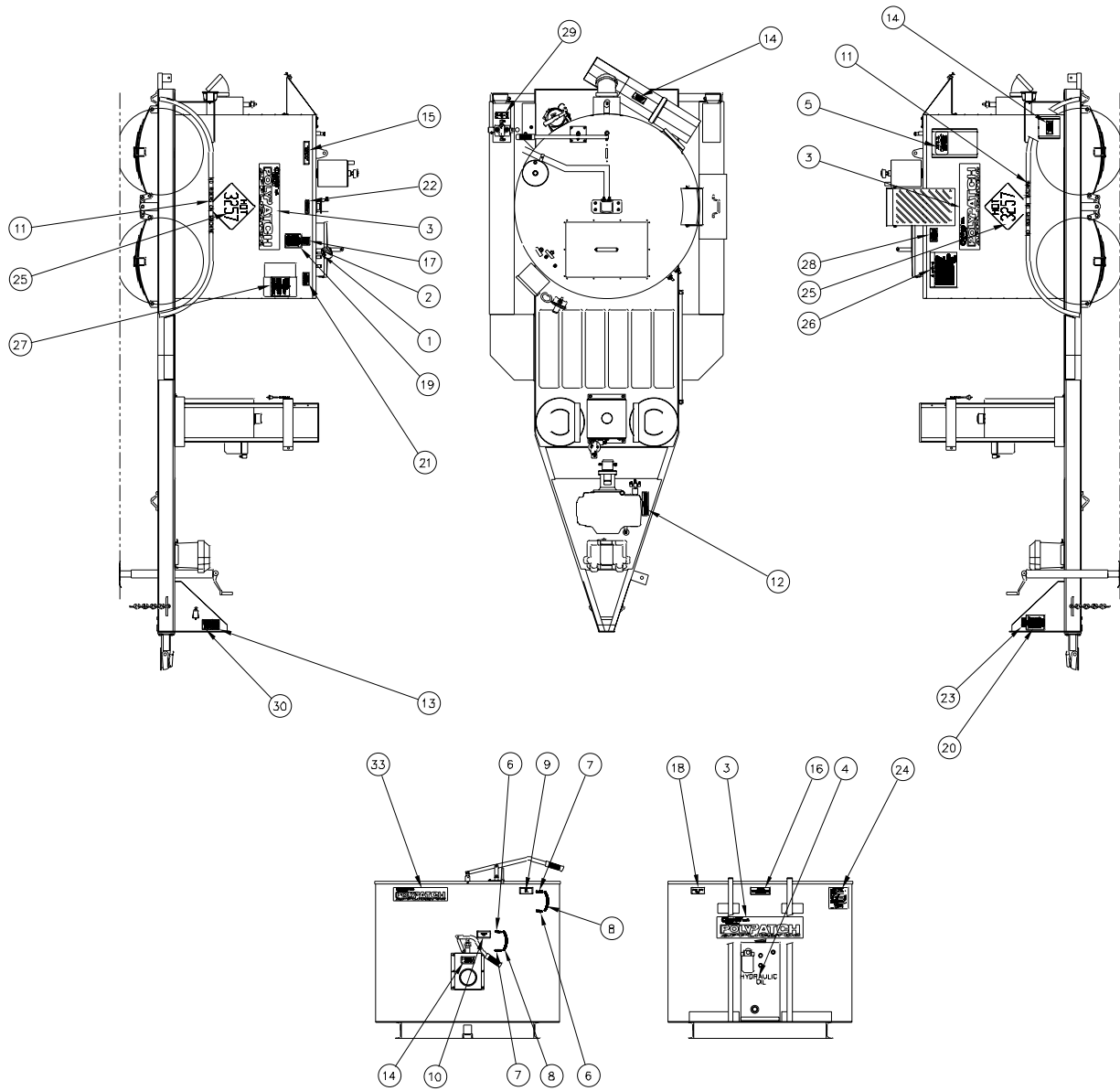
POLYPATCH 1 TON PROPANE TANK AND FRAME ASSY-44601-3PB

| NUMBER | PART NUMBER | QTY | DESCRIPTION |
|---------------|--------------------|------------|---------------------------|
| 101 | 28606 | 6 | 1/4-20 THREADED INSERT |
| 102 | 44622 | 1 | 4" GATE VALVE |
| 103 | 44621 | 1 | 4" FLANGE GASKET |
| 104 | 28202 | 1 | 4" 45° ELBOW |
| 105 | 24034 | 1 | #8-14GA. FORK TERMINAL |
| 106 | 24150 | 12' | 14 GA. AUTOM. WIRE, RED |
| 107 | 24215 | 1 | 5/16-14GA. RING TERMINAL |
| 108 | 44662 | 1 | 2 1/8" ID GROMMET |
| 109 | 43446 | 1 | 3" HOSE PROTECTOR |
| 110 | 44670 | 1 | VALVE COVER ASSEMBLY |
| 111 | 41137 | 0.5 | SHEET INSULATION (YELLOW) |
| 112 | 28701 | 5 | 1/4-20 X 3/4 BOLT |
| 113 | 42574 | 1 | HYDRAULIC MOTOR |
| 114 | 22029 | 2 | 3/8 JIC X 5/8 O'R ADAPTOR |
| 115 | 28763 | 4 | 1/2-13 X 1 3/4 BOLT |
| 116 | 28649 | 4 | 1/2 LOCK WASHER |
| 117 | 28504 | 4 | 1/2-13 HEX NUT |
| 118 | 44680 | 1 | MATERIAL TROUGH ASSY. |
| 119 | 28692 | 1 | 1/2" X 2 1/2" LOCK PIN |
| 120 | 44683 | 1 | CHAIN BRACKET |
| 121 | 27022 | 1 | CHAIN HOOK |
| 122 | 25073 | 2 | SPUD AND REGULATOR ASSY. |
| 123 | 21051 | 1 | HANDLE ROD |
| 124 | 25016 | 1 | HAND TORCH ASSEMBLY |
| 125 | 24190 | 2 | OVERNIGHT HEATER ROD |

POLYPATCH 1 TON PROPANE TANK AND FRAME ASSY-44601-3PB

| NUMBER | PART NUMBER | QTY | DESCRIPTION |
|---------------|--------------------|------------|--------------------------|
| 126 | 28350 | 2 | 1/2" X 1" BUSHING |
| 127 | 44014 | 1 | VENT GUARD |
| 128 | 29871 | 2 | 3/8 JIC X 1/4 NPT ELBOW |
| 129 | 28262 | 1 | 1/4" PIPE CROSS |
| 130 | 28001 | 1 | 1/4" CLOSE NIPPLE |
| 131 | 41579 | 1 | FRAME ASSEMBLY |
| 132 | 44645 | 2 | HOLDER TUBE |
| 133 | 28706 | 2 | 1/4-20 X 2" BOLT |
| 134 | 21292 | 1 | HANDLE |
| 135 | 44646 | 1 | COVER PLATE, O/N HEATERS |

POLYPATCH 1 TON PROPANE DECAL KIT-44602PB



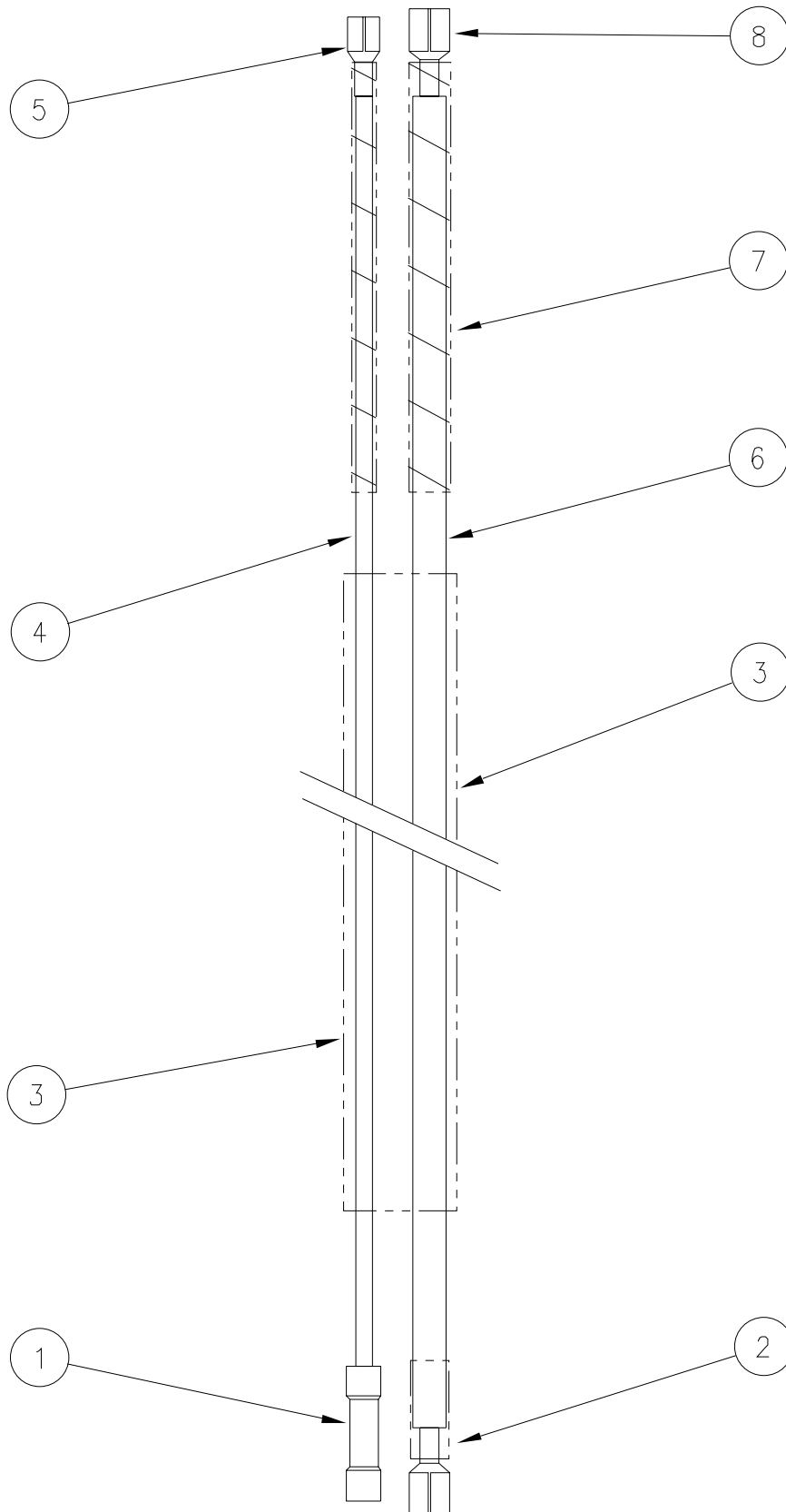
POLYPATCH 1 TON PROPANE DECAL KIT-44602PB

| NUMBER | PART NUMBER | QTY | DESCRIPTION |
|---------------|--------------------|------------|---------------------------|
| 1 | 26065 | 1 | "HOT OIL" DECAL |
| 2 | 26066 | 1 | "MATERIAL" DECAL |
| 3 | 26371 | 3 | "POLYPATCH" DECAL, LARGE |
| 4 | 26152 | 1 | "HYD. OIL DECAL " |
| 5 | 26274 | 1 | MANUAL BOX DECAL |
| 6 | 26153 | 2 | "OPEN" DECAL |
| 7 | 26154 | 2 | "CLOSE" DECAL |
| 8 | 26155 | 2 | RADIUS DECAL |
| 9 | 26181 | 1 | "TANK VALVE" PLATE |
| 10 | 26183 | 1 | "APPLICATOR VALVE" PLATE |
| 11 | 26156 | 2 | "NO RIDERS" DECAL |
| 12 | 26157 | 1 | "EXHAUST WARNING" DECAL |
| 13 | 26164 | 1 | "HITCH BOLT" DECAL |
| 14 | 26175 | 3 | "WARNING HOT" PLATE |
| 15 | 26176 | 1 | "READ INSTRUCTIONS" PLATE |
| 16 | 26177 | 1 | "DO NOT OPEN LID" PLATE |
| 17 | 26178 | 1 | "HEAT TRANSFER OIL" DECAL |
| 18 | 26188 | 1 | "VAPOR DRAW" PLATE |
| 19 | 26268 | 1 | "HEAT OIL CAUTION" DECAL |
| 20 | 26269 | 1 | "GENERAL CAUTIONS" DECAL |
| 21 | 26270 | 1 | "CALIBRATION" DECAL |
| 22 | 26271 | 1 | "KEEP FEET CLEAR" DECAL |
| 23 | 41143 | 1 | "HITCH WARNING" PLATE |
| 24 | 26273 | 1 | "VEHICLE I.D." DECAL |
| 25 | 26276 | 2 | "HOT" PLACARD |

POLYPATCH 1 TON PROPANE DECAL KIT-44602PB

| NUMBER | PART NUMBER | QTY | DESCRIPTION |
|---------------|--------------------|------------|--------------------------|
| 26 | 26298 | 1 | "WARNING" DECAL |
| 27 | 41144 | 1 | "BURNER INSTRUCT." PLATE |
| 28 | 41147 | 1 | "VENT DAMPER" PLATE |
| 29 | 41149 | 1 | "MIXER DIRECTION" PLATE |
| 30 | 41179 | 1 | "TOWING WARNING" PLATE |
| 31 | 26221 | 1 | SAFETY MANUAL |
| 32 | 26370 | 1 | OPERATING MANUAL |
| 33 | 26372 | 1 | "POLYPATCH" DECAL, SMALL |

IGNITION CABLE ASSY-44638PB



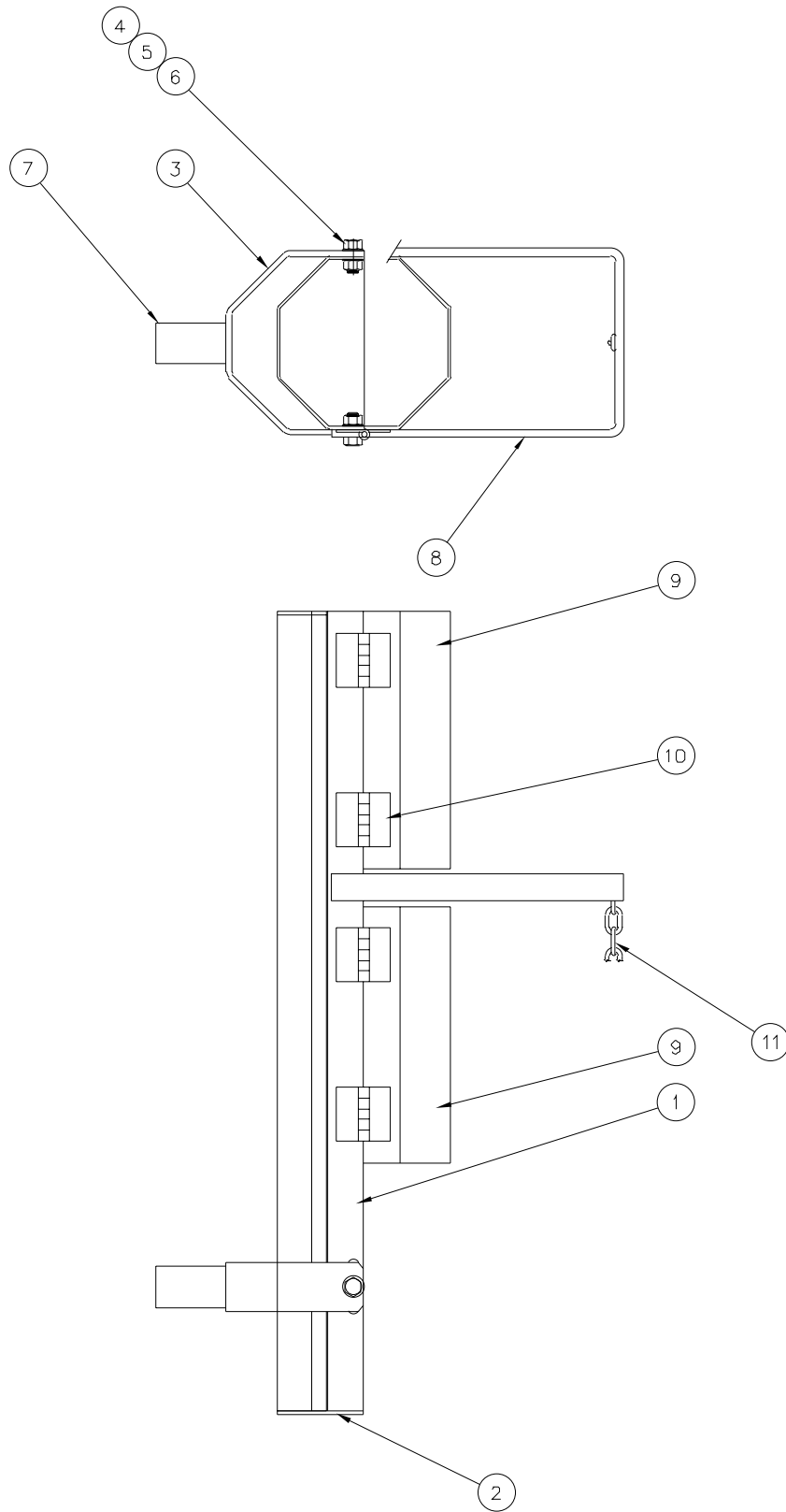
IGNITION CABLE ASSY-44638PB

| NUMBER | PART NUMBER | QTY | DESCRIPTION |
|--------|-------------|-----|--|
| 1 | 24029 | 1 | 14GA. BUTT CONNECTOR |
| 2 | 24072 | 1 | (3X1") 1/4 HEAT SHRINK (3 PLACES) |
| 3 | 32501 | 1 | (36") 3/8 CONVOLUTED LOOM |
| 4 | 24158 | 1 | (82") HI-TEMP. SENSOR WIRE |
| 5 | 51627 | 1 | 3/16-14 GA. NON-INS. PUSH-ON TERMINAL |
| 6 | 24189 | 1 | (82") IGNITION WIRE |
| 7 | 50529 | 1 | FIBERGLASS TAPE WRAP AROUND WIRES 14" LENGTH (2 PLACES) |
| 8 | 51628 | 2 | 1/4-18GA. NON-INS. PUSH-ON TERMINAL |

POLYPATCH MATERIAL TROUGH ASSEMBLY - 44680PB



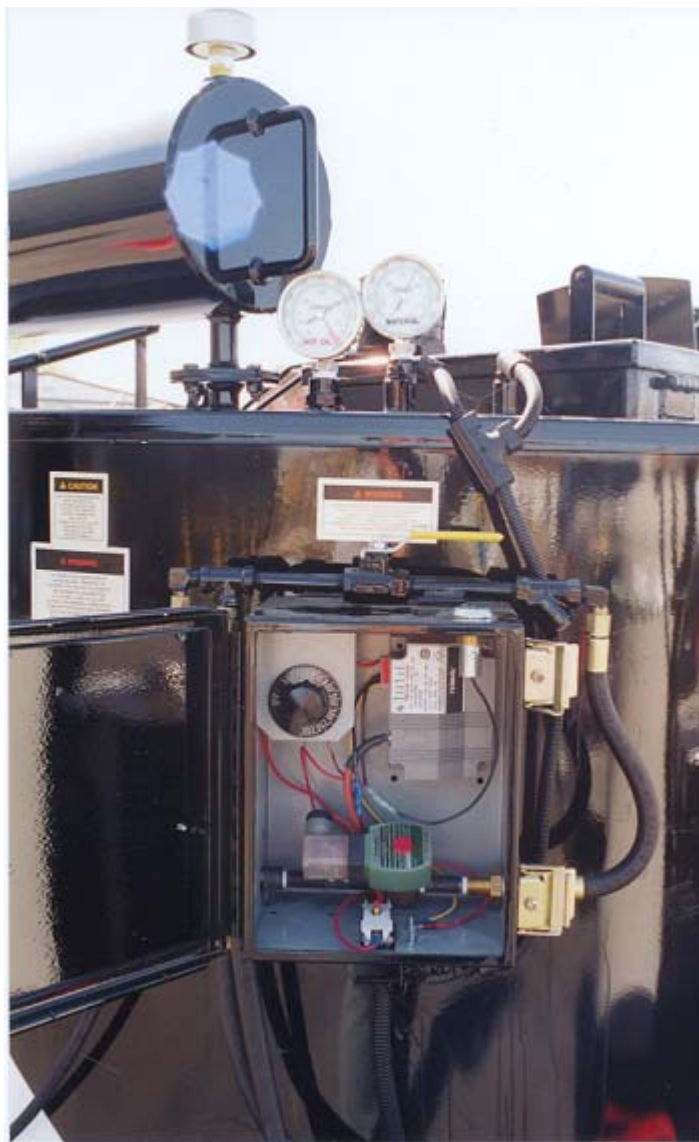
POLYPATCH MATERIAL TROUGH ASSY. - 44680PB



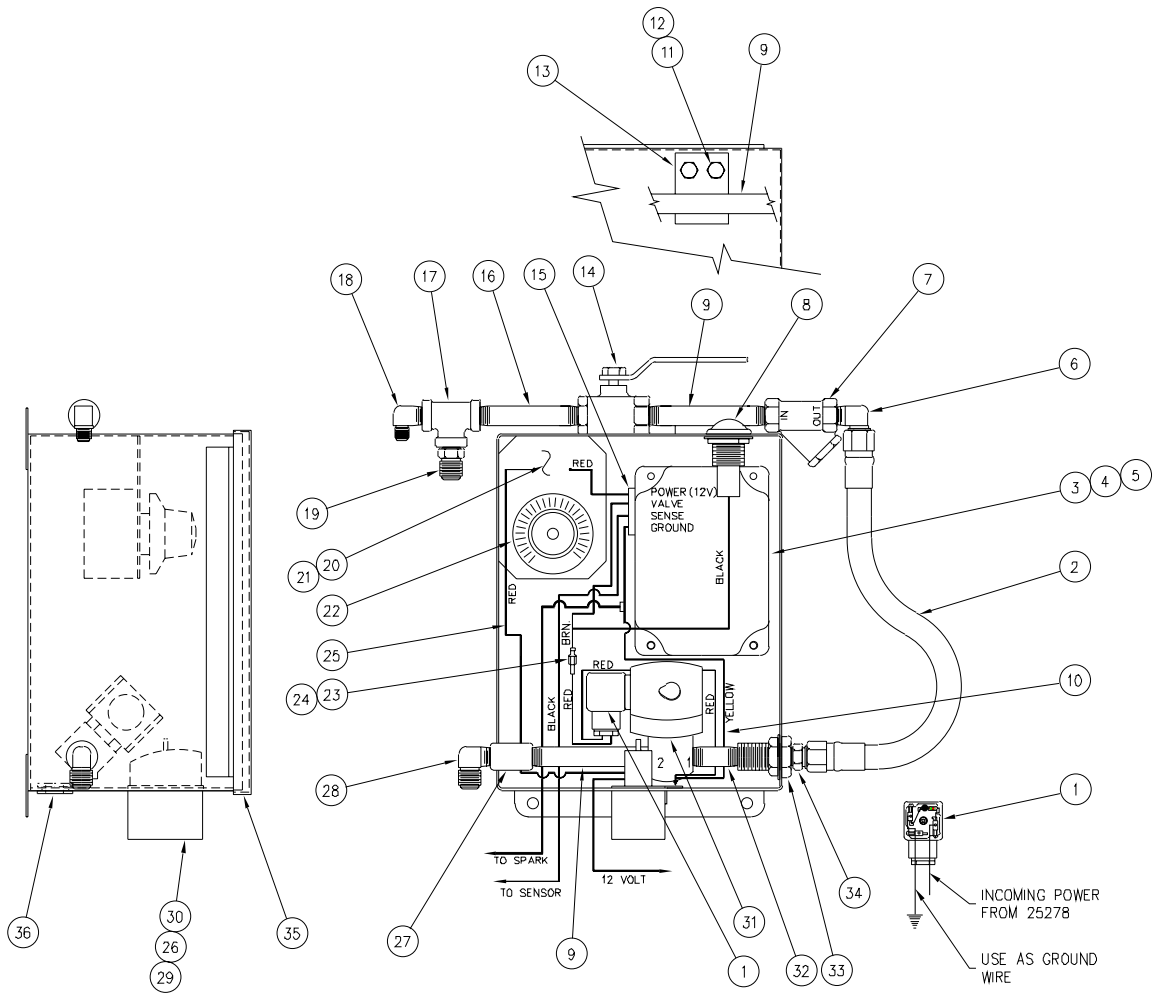
POLYPATCH MATERIAL TROUGH ASSY. - 44680PB

| NUMBER | PART NUMBER | QTY | DESCRIPTION |
|---------------|--------------------|------------|------------------------|
| 1 | 44681 | 1 | TROUGH BOTTOM |
| 2 | 44686 | 1 | TROUGH END PLATE |
| 3 | 44685 | 1 | TROUGH SUPPORT BRACKET |
| 4 | 28761 | 2 | 1/2-13 X 1 1/4" BOLT |
| 5 | 28674 | 4 | 1/2 FLAT WASHER |
| 6 | 28540 | 2 | 1/2-13 UPSET LOCK NUT |
| 7 | 44687 | 1 | TROUGH SWIVEL TUBE |
| 8 | 44684 | 1 | TROUGH HANDLE |
| 9 | 44682 | 2 | TROUGH TOP |
| 10 | 41107 | 4 | HINGE |
| 11 | 44688 | 1 | TROUGH CHAIN |

POLYPATCH CONTROL BOX ASSEMBLY - 44690PB



POLYPATCH CONTROL BOX ASSEMBLY - 44690PB



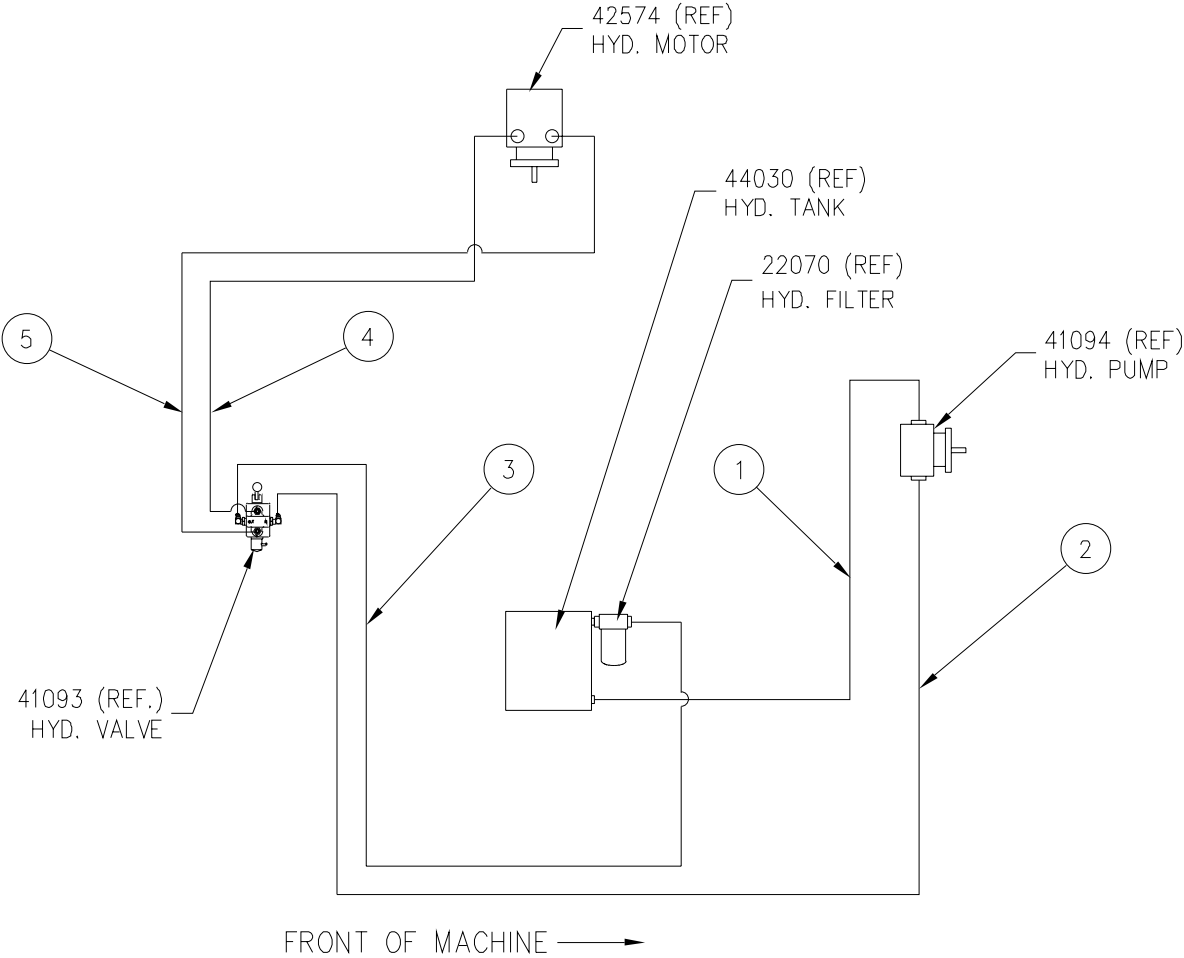
POLYPATCH CONTROL BOX ASSY. - 44690PB

| NUMBER | PART NUMBER | QTY | DESCRIPTION |
|---------------|--------------------|------------|--------------------------------|
| 1 | 43474 | 1 | DIN PLUG, 12VDC |
| 2 | LP6-12 | 1 | 3/8" X 37" HOSE |
| 3 | 25278 | 1 | SPARK CONTROL MODULE |
| 4 | 28833 | 4 | #8-32 X 1 SCREW |
| 5 | 28835 | 4 | #8-32 HEX NUT |
| 6 | 29871 | 2 | ELBOW-90 DEG SAE MP 6 MS-4MPRA |
| 7 | 25208 | 1 | STRAINER |
| 8 | 24140 | 1 | INDICATOR LIGHT |
| 9 | 28035 | 3 | NIPPLE 1/4 X 4" STD. BLK |
| 10 | 24027 | 1 | TERMINAL #8 |
| 11 | 28536 | 2 | 1/4-20 LOCKNUT |
| 12 | 28701 | 2 | 1/4-20 X 3/4 BOLT |
| 13 | 40540 | 1 | BRKT, PIPE MTG. |
| 14 | 29195 | 1 | BRONZE BALL VALVE - 1/4" |
| 15 | 25272 | 1 | WRING HARNESS ASCO VALVE |
| 16 | 28036 | 1 | 1/4" X 3 1/2" NIPPLE |
| 17 | 28251 | 1 | 1/4" PIPE TEE |
| 18 | 29870 | 1 | JIX X 1/4 NPT ELBOW |
| 19 | 29839 | 1 | ADAPTER - STRAIGHT 6MS-4MP |
| 20 | 25276 | 1 | ELECTRIC THERMOSTAT-550 DEG |
| 21 | 28832 | 2 | #6-32 X 3/8 SCREW |
| 22 | 25220 | 1 | TEMPERATURE INDICATOR DIAL |
| 23 | 24228 | 1 | MALE TAB INSULATED |
| 24 | 24229 | 1 | FEMALE INSULATED |
| 25 | 25270 | 1 | WIRE, SWITCH TO TEMP REGULATOR |

POLYPATCH CONTROL BOX ASSY. - 44690PB

| NUMBER | PART NUMBER | QTY | DESCRIPTION |
|---------------|--------------------|------------|----------------------------------|
| 26 | 28838 | 1 | #6-32 X 1/2 SCREEN |
| 27 | 28176 | 1 | PIPE COUPLING 1/4" |
| 28 | 29871 | 1 | ELBOW - 90 DEG. SAE MP 6MS-4MPRA |
| 29 | 28839 | 1 | #6-32 NUT |
| 30 | 25240 | 1 | MANUAL RESET TEMPERATURE PROBE |
| 31 | 25236 | 1 | BURNER SERVO CONT. VALVE |
| 32 | 28043 | 1 | NIPPLE 1/4 X 2" BLK. |
| 33 | 29830 | 1 | BULKHEAD COUPLING |
| 34 | 29839 | 1 | ADAPTER - STRAIGHT 6MS-4MP |
| 35 | 25250 | 1 | REWORK, CONTROL BOX |
| 36 | 26075 | 1 | RUBBER GROMMET GR 34-14 |

POLYPATCH 1 TON PROPANE HYDRAULIC SCHEMATICS - 26560PB



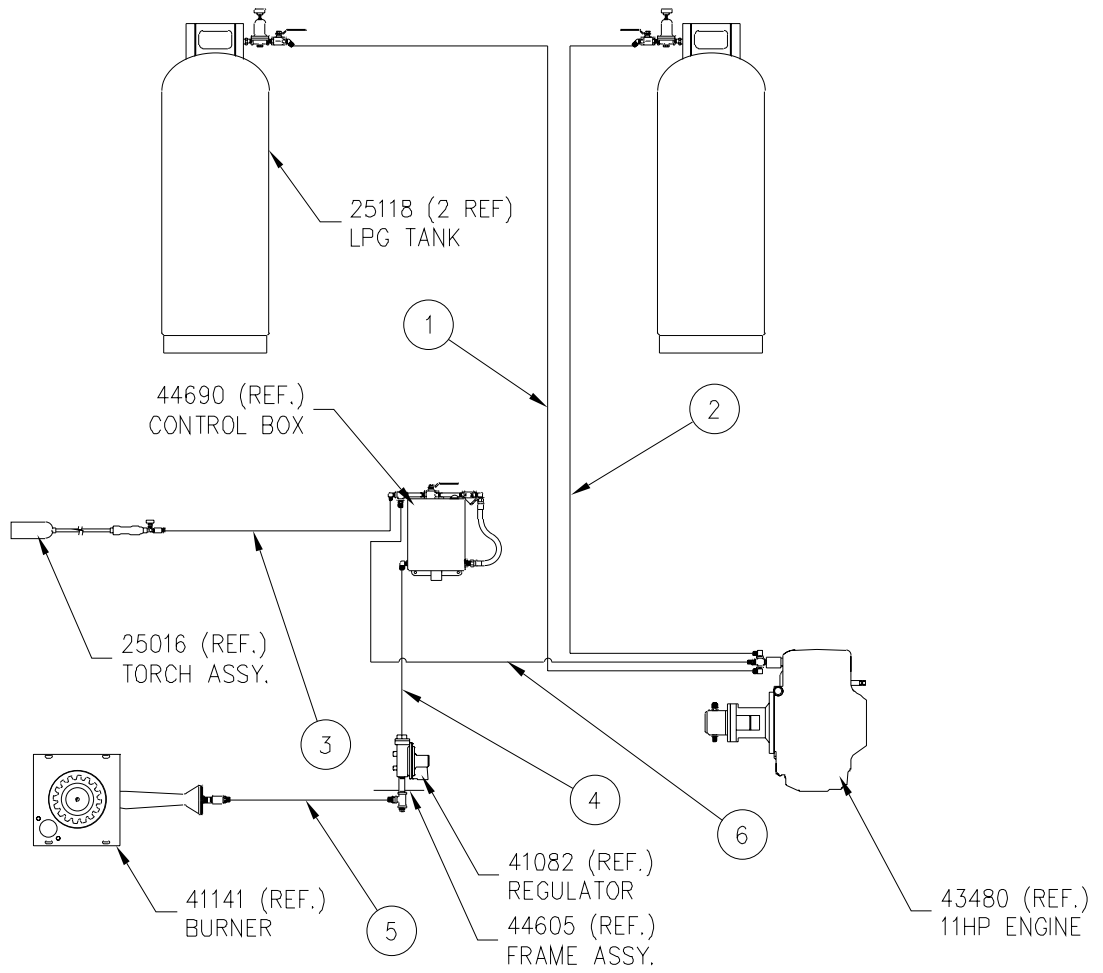
POLYPATCH 1 TON PROPANE HYDRAULIC SCHEMATICS - 26560PB

| 1. HYDRAULIC RESERVOIR TO HYDRAULIC PUMP (SUCTION) PORT | | |
|--|--------------------|-------------------------------|
| 1 | 40921 | 1" TUBE X 1" NPT ADAPTOR |
| 1 | C 12-16FJ-12FJ9-31 | HYD. HOSE ASSY., 3/4 X 31" |
| 1 | 29819 | 3/4 TUBE X 3/4 O-RING ADAPTOR |
| 2. HYDRAULIC PUMP PRESSURE TO HYD. VALVE "IN" PORT | | |
| 1 | 29812 | 5/8 TUBE X 5/8 O-RING ADAPTOR |
| 1 | 22110 | HYD. HOSE ASSY., 1/2 X 27" |
| 1 | 29806 | 5/8 TUBE BULKHEAD UNION ELBOW |
| 1 | 29807 | 5/8 BULKHEAD NUT |
| 1 | 44660 | PRESSURE TUBE ASSY. |
| 1 | 29807 | 5/8 BULKHEAD NUT |
| 1 | 29805 | 5/8 TUBE BULKHEAD UNION |
| 1 | 29809 | 3/8 X 5/8 TUBE REDUCER |
| 1 | 29810 | 5/8 TUBE NUT |
| 1 | 40012 | HYD. HOSE ASSY., 3/8 X 24" |
| 1 | 29828 | 3/8 TUBE X 5/8 O-RING ELBOW |
| 3. HYDRAULIC VALVE "OUT" PORT TO HYD. RESERVIOR | | |
| 1 | 29828 | 3/8 TUBE X 5/8 O-RING ELBOW |
| 1 | 40012 | HYD. HOSE ASSY., 3/8 X 24" |
| 1 | 29810 | 5/8 TUBE NUT |
| 1 | 29809 | 3/8 X 5/8 TUBE REDUCER |
| 1 | 29805 | 5/8 TUBE BULKHEAD UNION |
| 1 | 29807 | 5/8 BULKHEAD NUT |
| 1 | 44659 | RETURN TUBE ASSY. |
| 1 | 29807 | 5/8 BULKHEAD NUT |
| 1 | 29806 | 5/8 TUBE BULKHEAD UNION ELBOW |
| 1 | 29502 | HYD. HOSE ASSY., 1/2 X 43" |
| 1 | 29945 | 5/8 TUBE X 1" NPT ELBOW |
| 4. HYDRAULIC VALVE "A" PORT TO HYD. MOTOR L.H. PORT | | |
| 1 | 22029 | 3/8 TUBE X 5/8 O-RING ADAPTOR |
| 1 | 40012 | HYD. HOSE ASSY., 3/8 X 24" |
| 1 | 29808 | 3/8 TUBE X 3/8 TUBE ADAPTOR |
| 1 | 41155 | L.H. TUBE ASSY. |
| 1 | 22029 | 3/8 TUBE X 5/8 O-RING ADAPTOR |
| 5. HYDRAULIC VALVE "B" PORT TO HYD. MOTOR R.H. PORT | | |
| 1 | 22029 | 3/8 TUBE X 5/8 O-RING ADAPTOR |
| 1 | 40012 | HYD. HOSE ASSY., 3/8 X 24" |
| 1 | 29808 | 3/8 TUBE X 3/8 TUBE ADAPTOR |
| 1 | 41156 | R.H. TUBE ASSY. |
| 1 | 22029 | 3/8 TUBE X 5/8 O-RING ADAPTOR |

NOTES:

1. HYDRAULIC PUMP SPEED @ NO LOAD 2300 RPM
2. HYDRAULIC PRESSURE SET TO 2500 P.S.I.

POLYPATCH 1 TON PROPANE LPG PIPING DIAGRAM - 26561PB



POLYPATCH 1 TON PROPANE LPG PIPING DIAGRAM - 26561PB

| 1. CURB SIDE L.P.G. TANK TO ENGINE | | |
|---|-------|---|
| 1 | 25073 | SPUD AND REGULATOR ASSY., CONTAINS: |
| 1 | 25123 | TANK SPUD |
| 1 | 25066 | REGULATOR |
| 1 | 28001 | 1/4 CLOSE |
| 1 | 29195 | 1/4 BALL VALVE |
| 1 | 29857 | 3/8 TUBE X 1/4 NPT 45° ELBOW |
| 1 | 25131 | LPG HOSE ASSY., 3/8 X 60" |
| 1 | 29871 | 3/8 TUBE X 1/4 NPT ELBOW |
| 2. ROAD SIDE L.P.G. TANK TO ENGINE | | |
| 1 | 25073 | SPUD AND REGULATOR ASSY., SEE ABOVE FOR ASSEMBLY COMPONENTS |
| 1 | 25131 | LPG HOSE ASSY., 3/8 X 60" |
| 1 | 29871 | 3/8 TUBE X 1/4 NPT ELBOW |
| 3. CONTROL BOX TO HAND TORCH | | |
| 1 | 29870 | 1/4 TUBE X 1/4 NPT ELBOW |
| 1 | 25016 | HAND TORCH ASSY. |
| 1 | 25130 | HOSE ASSY., 1/4 X 144" |
| 1 | 28176 | 1/4 PIPE COUPLING |
| 4. CONTROL BOX TO REGULATOR | | |
| 1 | 29871 | 3/8 TUBE X 1/4 NPT ELBOW |
| 1 | 25142 | LPG HOSE ASSY., 3/8 X 31" |
| 1 | 29832 | 3/8 TUBE X 1/2 NPT ADAPTOR |
| 5. REGULATOR TO BURNER | | |
| 1 | 28026 | 1/2 X 3" PIPE NIPPLE |
| 1 | 28263 | 1/2 X 1/2 X 3/8 PIPE TEE |
| 1 | 28283 | 1/2 PIPE PLUG |
| 1 | 29840 | 3/8 TUBE X 3/8 NPT ADAPTOR |
| 1 | 25146 | LPG HOSE ASSY., 3/8 X 23" |
| 1 | 29832 | 3/8 TUBE X 1/2 NPT ADAPTOR |
| 6. ENGINE TO CONTROL BOX | | |
| 1 | 29839 | 3/8 TUBE X 1/4 NPT ADAPTOR |
| 1 | 25139 | LPG HOSE ASSY., 3/8 X 120" |
| 1 | 29839 | 3/8 TUBE X 1/4 NPT ADAPTOR |

NOTES:

1. USE TEFLON SEALANT TAPE ON PIPE CONNECTIONS.
2. BURNER GAS PRESSURE 13" W.C.

**Pioneering Leadership and
Innovation in Quality
Pavement Maintenance
Materials.**



**235 South Hibbert • Mesa, Arizona 85210
480-655-8333 • Watts 1-800-528-8242
Fax 480-655-1712**

©Copyright 1998 by Crafco, Inc.